



M165985A

ITEM NUMBER: 165985

SERIAL NUMBER: _____

Owner's Manual

Generator Wheel Kit

For use on 165650 NorthStar Generator

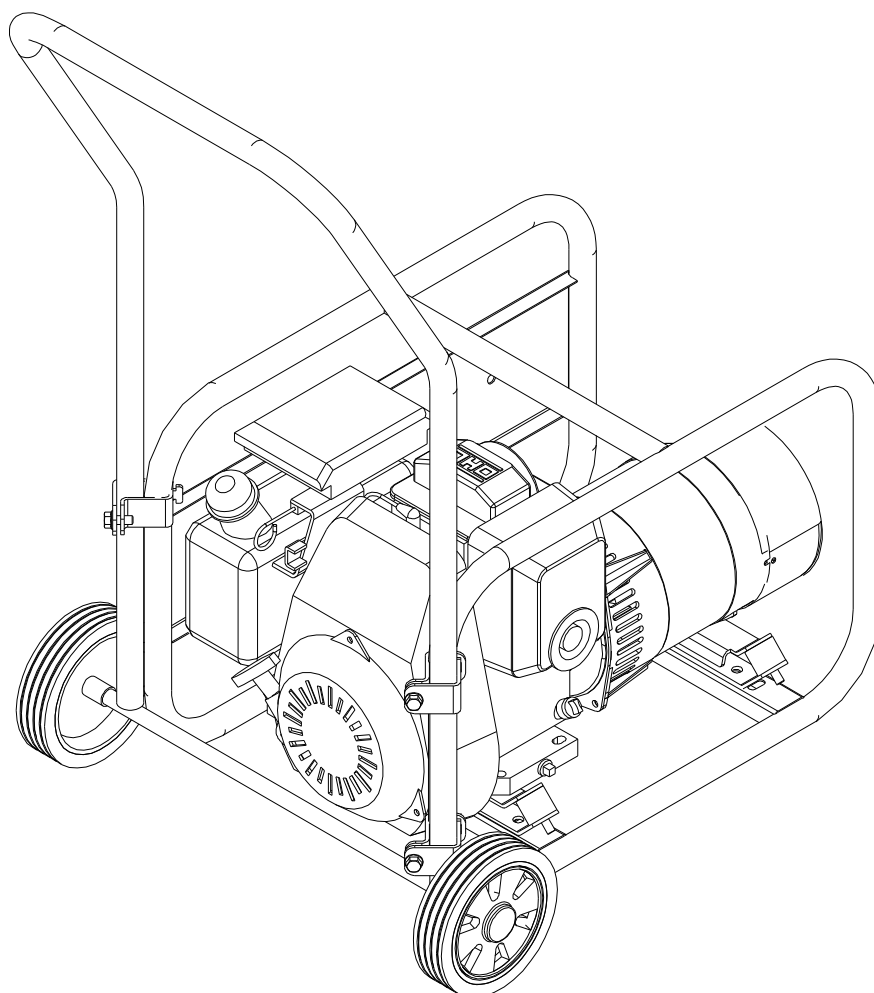
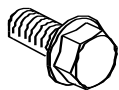


FIG06038

Any Questions, Comments, or Problems
Call Customer Service 1-800-270-0810

STEP 1

- Make sure you have all the components shown on this page.



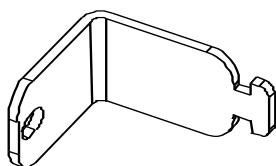
5/16 x 3/4" Flange Bolt
Qty. 3



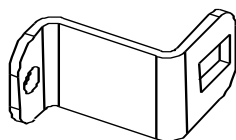
5/16" Flange Nut
Qty. 3



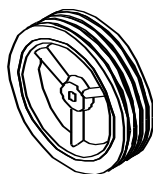
Wheel Retainer
Qty. 2



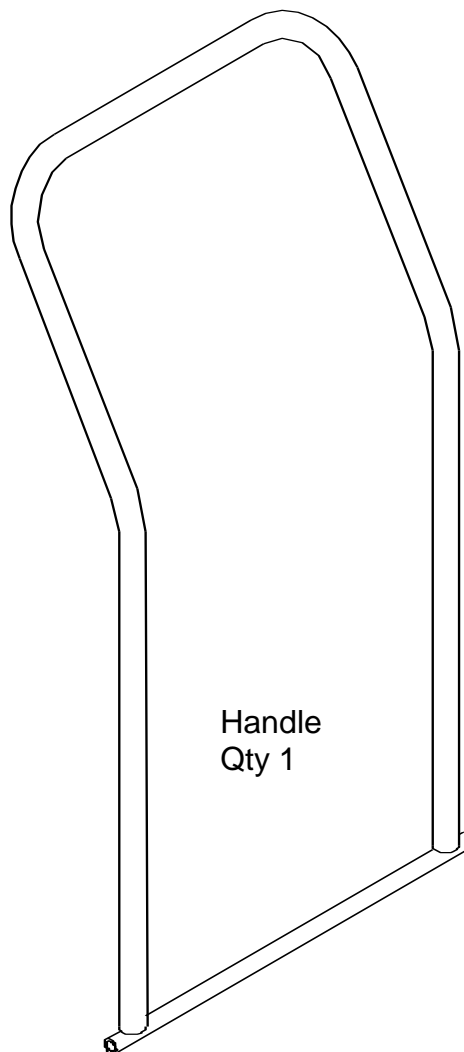
Outside Clamp Half
Qty. 3



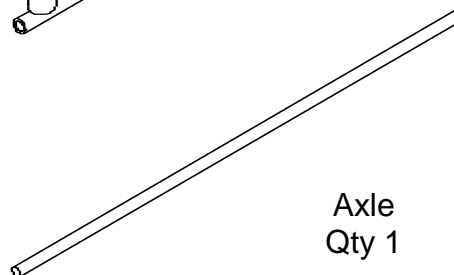
Inside Clamp Half
Qty. 3



Wheel
Qty. 2



Handle
Qty 1



Axle
Qty 1

STEP 2

- Tap one wheel retainer (4) onto the axle using a hammer.
- Slide one wheel (3) onto the axle (1), so that the offset hub is opposite the wheel retainer (4).
- Slide the axle (1) through the tube on the handle (2).
- Position the handle so the axle (1) is perpendicular to a hard, flat surface with the non-wheel side facing up.
- Slide the second wheel (3) onto the axle (1).
- Tap the remaining retainer (4) onto the axle using a hammer.

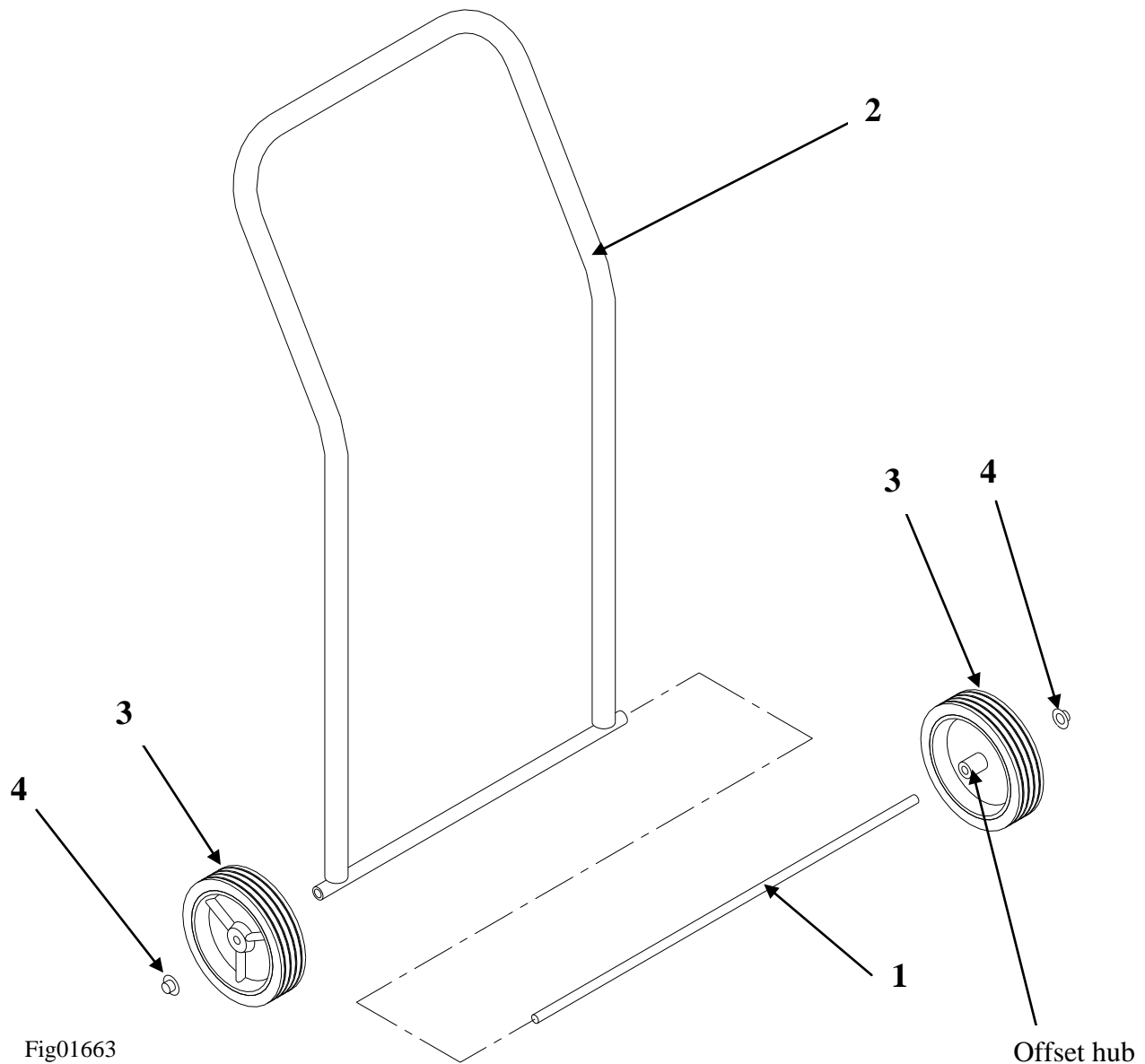


Fig01663

Ref.	Item #	Description	Qty.
1	796694	Axle	1
2	796696	Handle	1
3	779386	Wheel	2
4	34816	Wheel Retainer	2

STEP 3

- Position the Handle/Wheel Assembly next to the vertical portion of the generator roll cage with the wheels touching the ground.
- Combine the Inside Clamp (6) and Outside clamp (7). Slip the clamps around the Handle and the rollcage tubes.
- Loosely attach the 3 clamps with 5/16 Flange Nut (8) and 5/16 x 1" Flange Bolt (9). Tighten all clamps after they are in place.

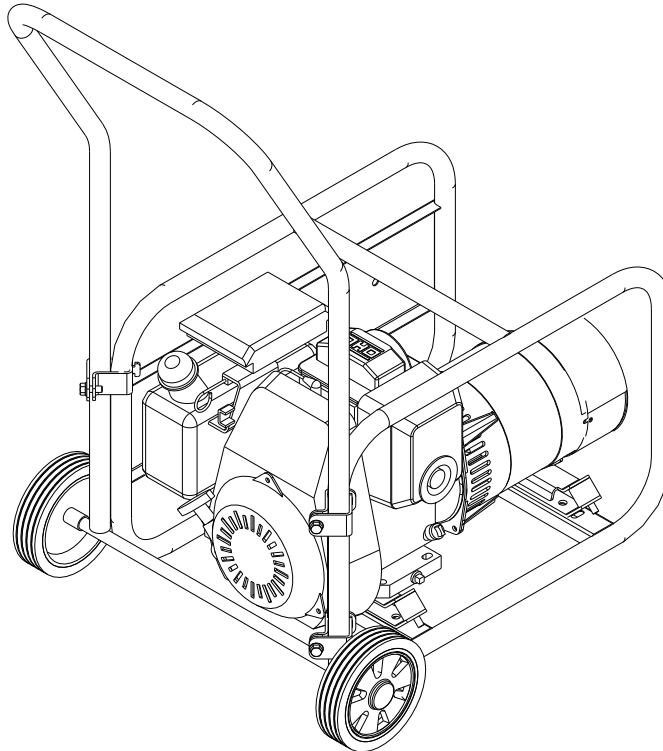


FIG06038

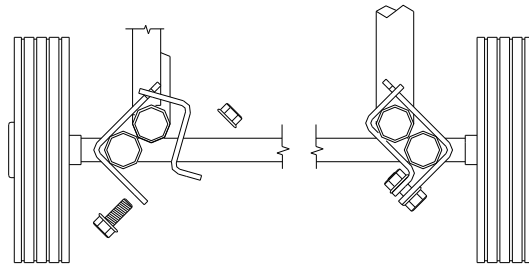


FIG06039

Ref.	Item #	Description	Qty.
6	777298	Inside Clamp	3
7	38236	Outside Clamp	3
8	82019	5/16 Flange Nut	3
9	82015	5/16 x 1" Flange Bolt	3